



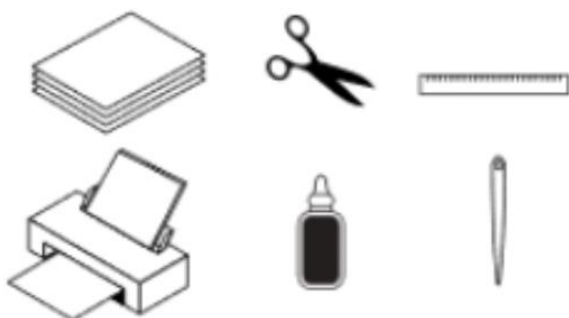
**#MYFORTNITEWINTERFEST**

**CRACKSHOT  
MINI-FOLDABLE**



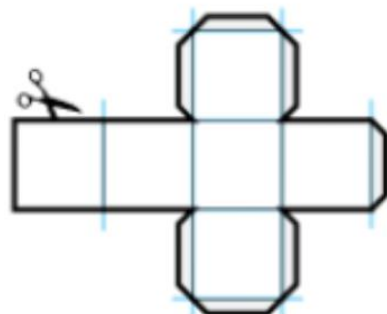
**DIFFICULTY LEVEL: VERY EASY**  
**TIME REQUIRED: 40-60 MIN**

## HOW TO BUILD



### WHAT YOU NEED:

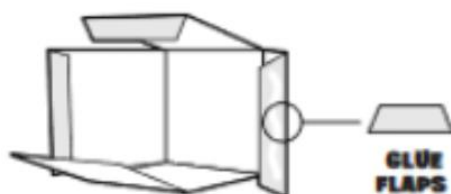
- A4 / US LETTER PAPER OR CARDSTOCK
- RECOMMENDED PAPER THICKNESS:  
120GSM - 160GSM
- PRINTER
- SCISSORS OR CUTTER
- CRAFT GLUE
- FOLDING BONE OR THICK NEEDLE
- RULER



### 1. PRINT, SCORE & CUT

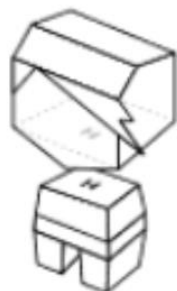
PRINT THE PATTERN. USING A FOLDING BONE OR A THICK SEWING NEEDLE AND A RULER, SCORE ALONG THE FOLDING LINES (ILLUSTRATED IN BLUE) SO YOU CAN EASILY FOLD THE PIECES.

NOW CUT THE PATTERN PIECES ALONG THE OUTER EDGE.



### 2. FOLD & GLUE

FOLD AND GLUE EACH BUILDING BLOCK OF THE FIGURE SEPARATELY. APPLY THE GLUE ON THE GLUE FLAPS AS SHOWN IN THE ILLUSTRATION.



### 3. ASSEMBLY

PUT ALL THE INDIVIDUAL PIECES TOGETHER. REFER TO THE SMALL LABELS THAT INDICATE WHICH PIECE GOES WHERE AND ASSEMBLE THE FIGURE IN THE CORRECT ORDER.

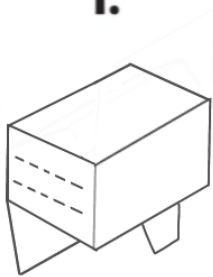


# WINTERFEST

## ORDER OF ASSEMBLY

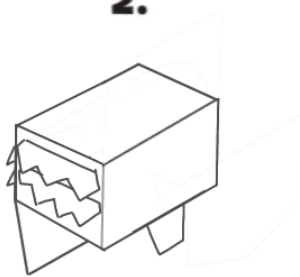
Fold the head except for the bottom and cut the dashed line

1.



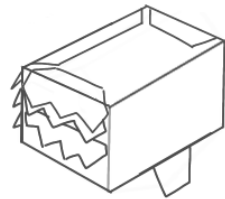
Glue the hair pieces on the inside then close the bottom

2.

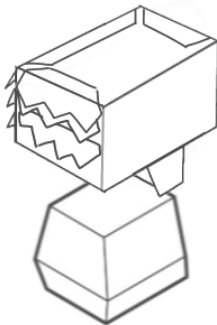


Glue the last hair pieces on the top

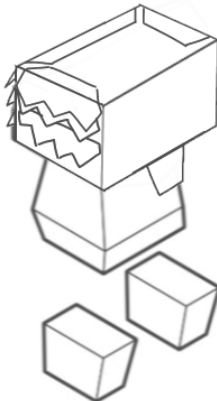
3.



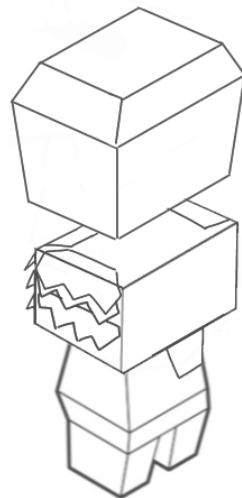
4.



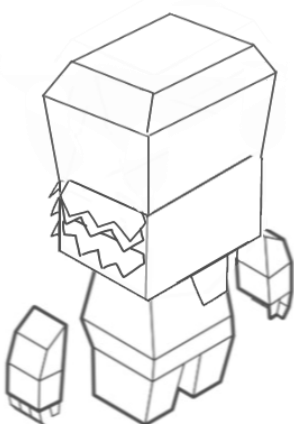
5.



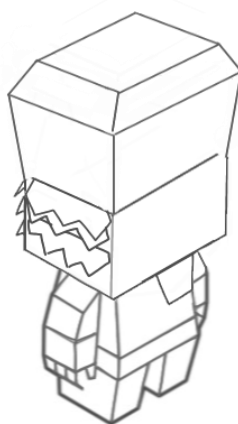
6.



7.

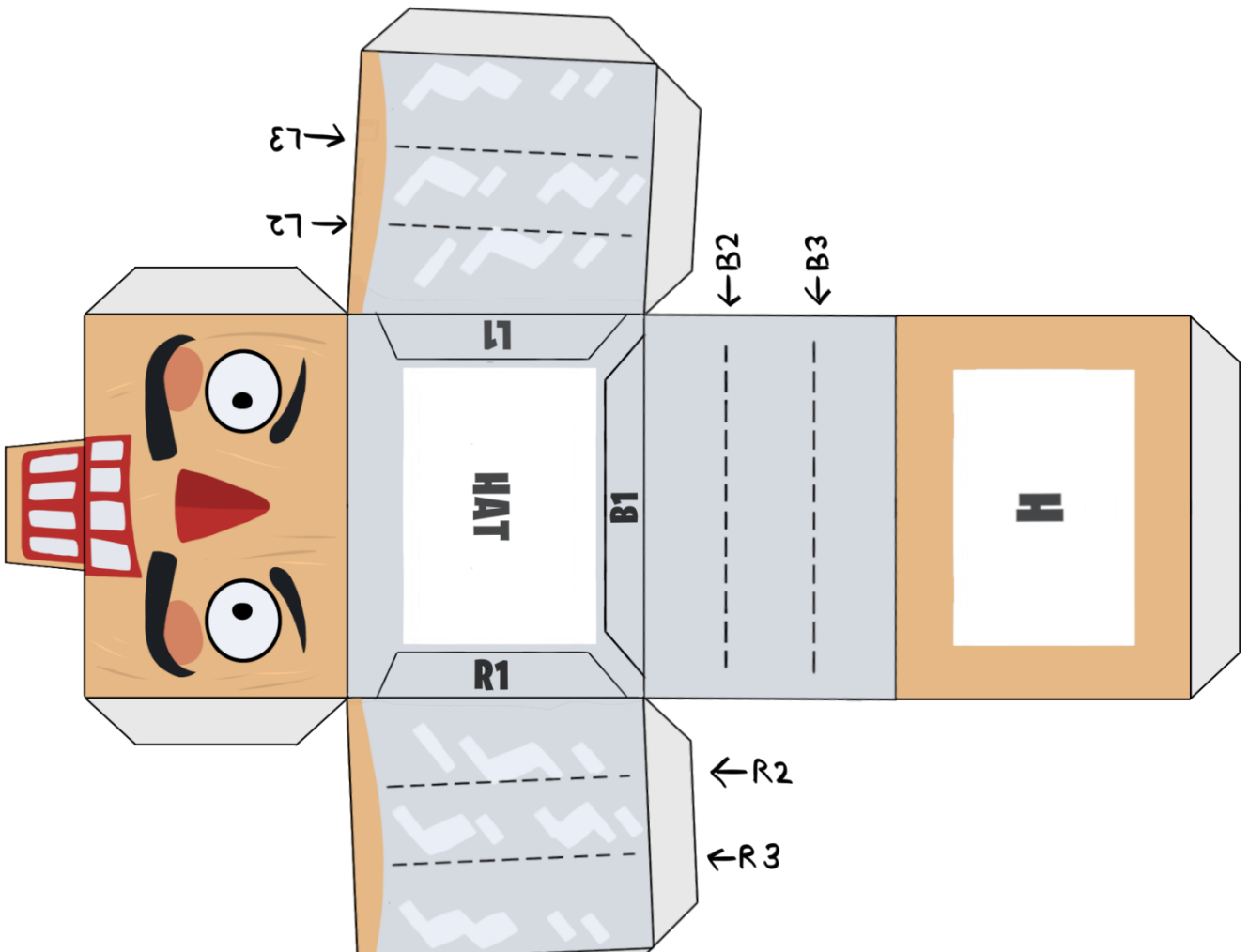
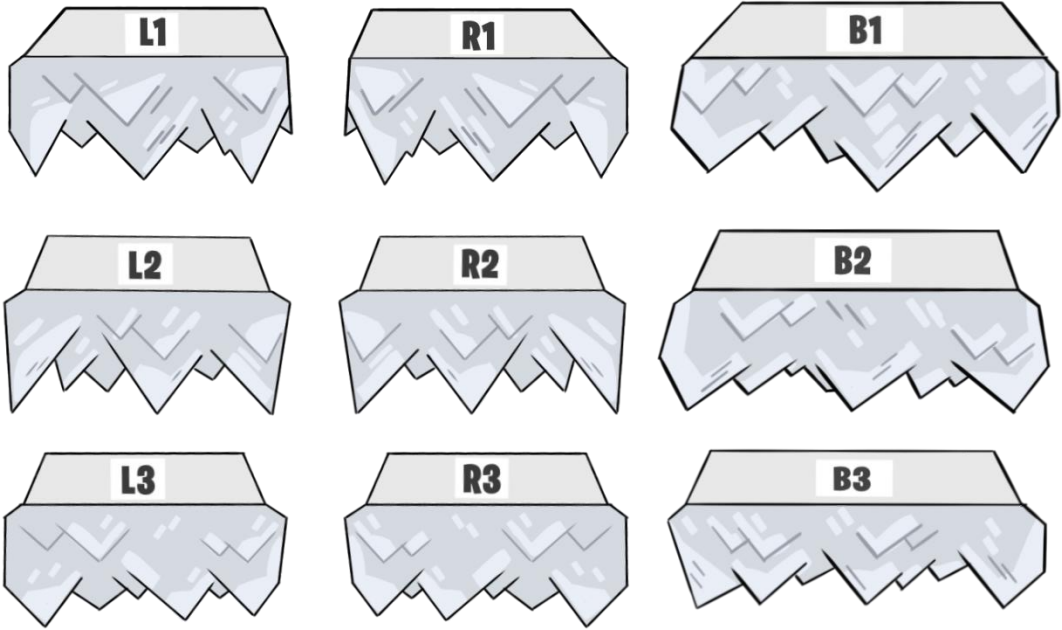


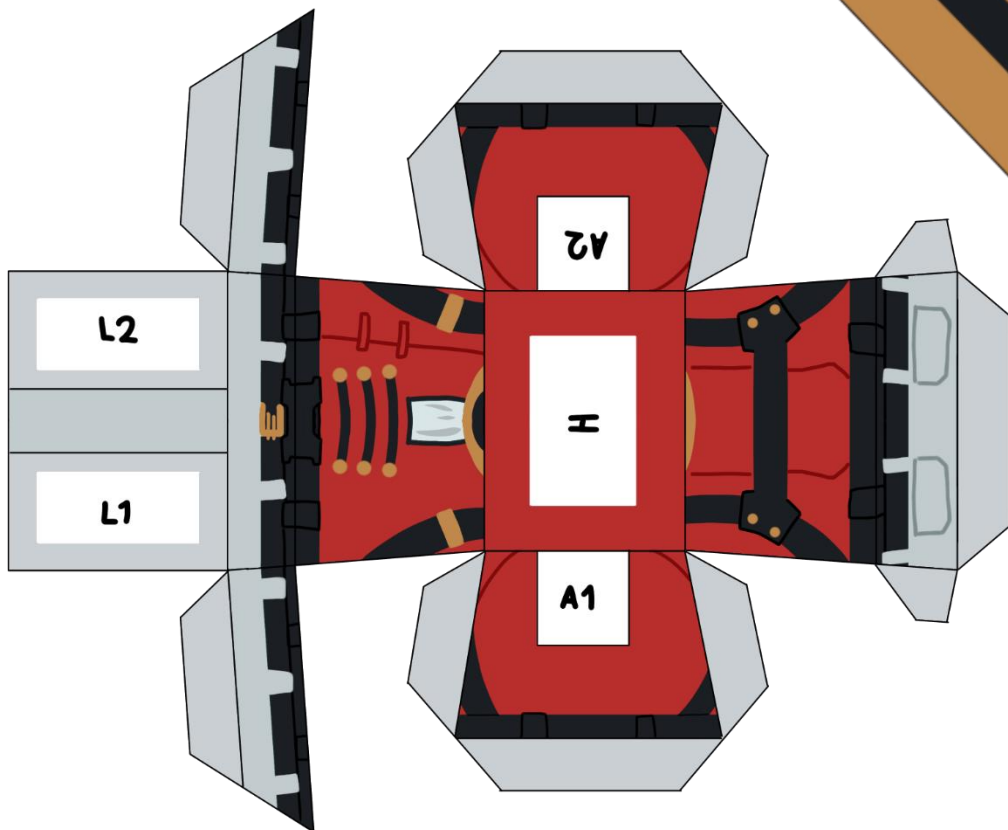
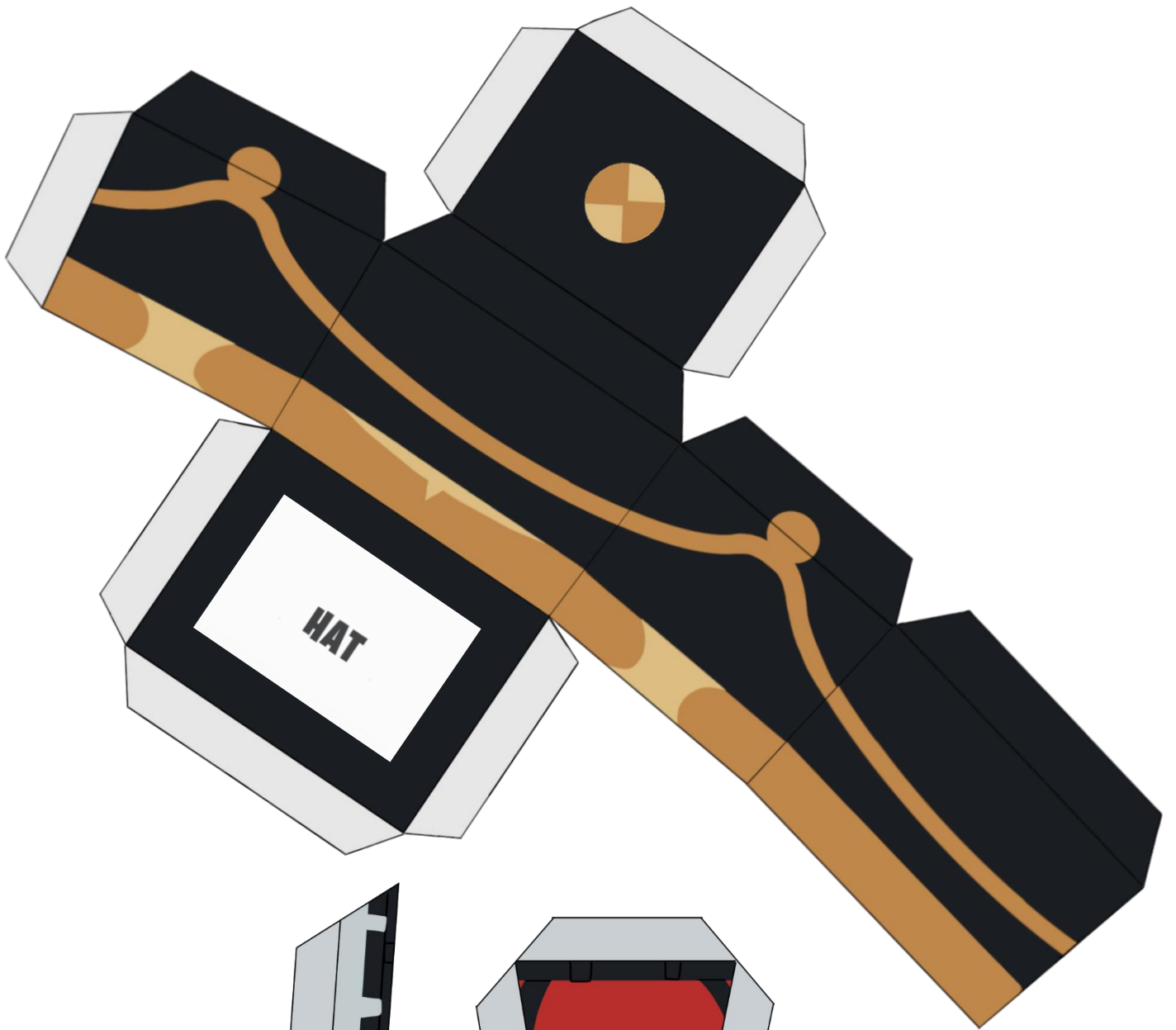
8.



9.









# WINTERFEST

1



2



3

